

PLAN HOLD CORPORATION • IRVINE, CALIFORNIA
RECORDED BY NUMBER 07544

PLAN HOLD CORPORATION • IRVINE, CALIFORNIA
RECORDED BY NUMBER 07544

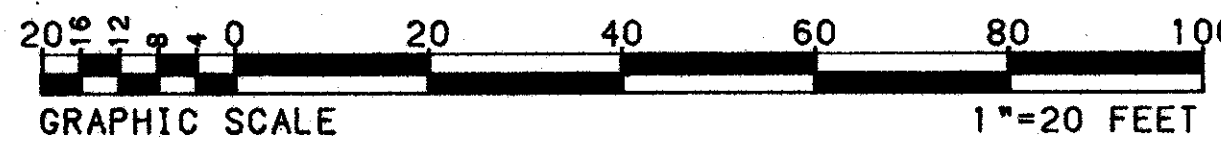
PLAN HOLD CORPORATION • IRVINE, CALIFORNIA
RECORDED BY NUMBER 07544

PLAN HOLD CORPORATION • IRVINE, CALIFORNIA
RECORDED BY NUMBER 07544

TRACT K

A REPLAT OF ALL OF TRACT K OF THE PLAT MISSION BAY,
A P.U.D., AS RECORDED IN PLAT BOOK 53, AT PAGES 112 THRU 120, INCLUSIVE
OF THE PUBLIC RECORDS OF PALM BEACH COUNTY, FLORIDA.
SECTION 13, TOWNSHIP 47 SOUTH, RANGE 41 EAST
SHEET 2 OF 2 SHEETS AUGUST, 1986

125

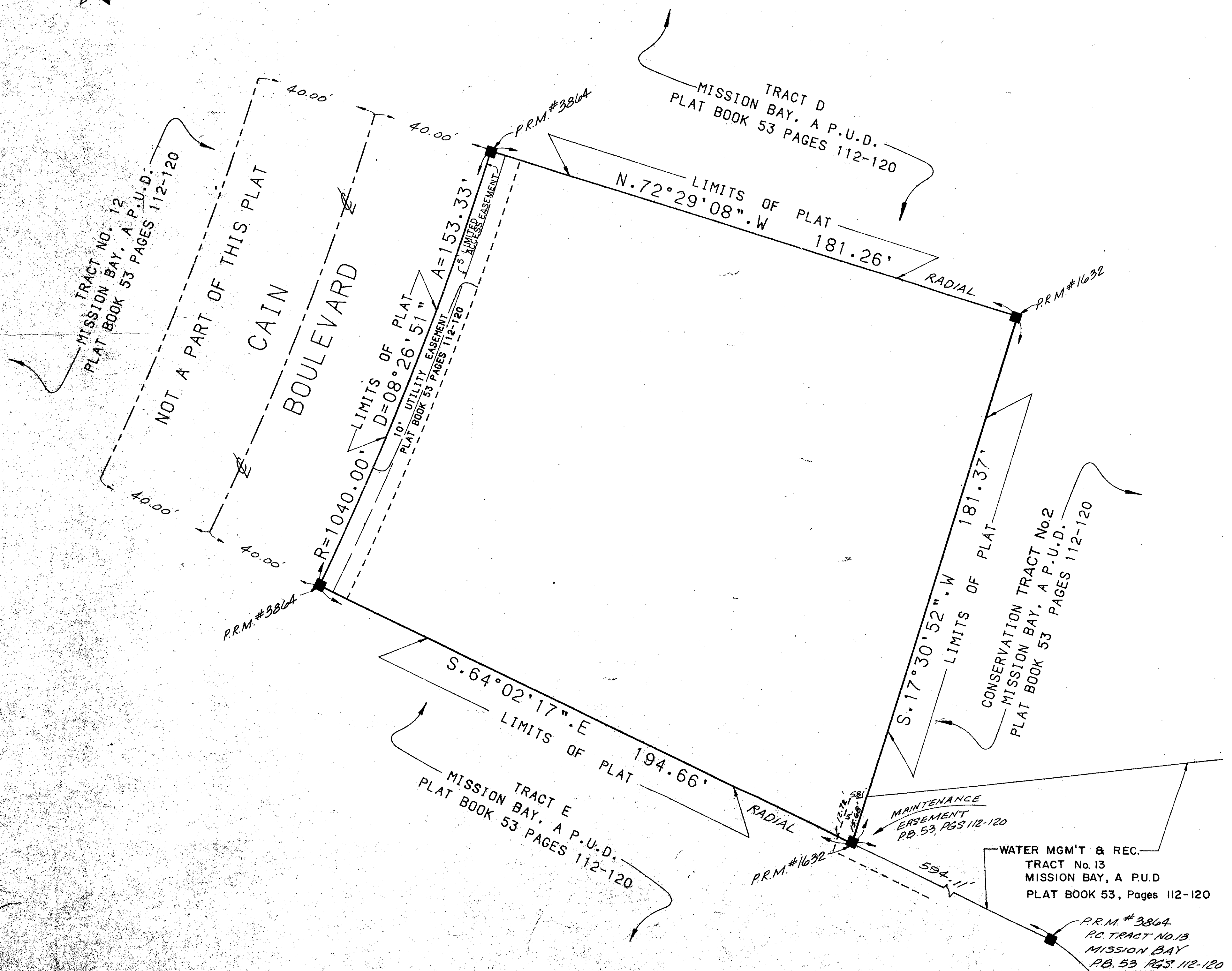


12/47/41

SHEET NO.	1	OF	1
BOOK	56	PAGE	125
FLOOD MAP		FLOOD MAP #	1000
QUAD	68	ZONING	
SE		ZIP CODE	33434
PUD NAME			

SURVEY NOTES:

- 1) THE BEARINGS AS SHOWN HEREON ARE BASED UPON THE PLAT MISSION BAY, A P.U.D., AS RECORDED IN PLAT BOOK 53, AT PAGES 112 THRU 120 INCLUSIVE, OF THE PUBLIC RECORDS OF PALM BEACH COUNTY, FLORIDA.
- 2) THE BEARING BASE IS THE SOUTHWESTERLY LINE OF TRACT K OF THE PLAT MISSION BAY, A P.U.D., HAVING A BEARING OF SOUTH 64°02'17" EAST.
- 3) ■ DENOTES P.R.M. (PERMANENT REFERENCE MONUMENT)
- 4) ● DENOTES P.C.P. (PERMANENT CONTROL POINT)
- 5) NO BUILDINGS SHALL BE PLACED UPON UTILITY OR DRAINAGE EASEMENTS.
- 6) NO STRUCTURES, TREES OR SHRUBS SHALL BE PLACED UPON DRAINAGE EASEMENTS.
- 7) LANDSCAPING WITHIN A UTILITY EASEMENT SHALL BE ONLY WITH THE APPROVAL OF ALL UTILITY COMPANIES OCCUPYING THE EASEMENT.



0454-008

WATER MGM'T & REC.
TRACT No. 13
MISSION BAY, A P.U.D.
PLAT BOOK 53, Pages 112-120

THIS INSTRUMENT WAS PREPARED BY:
JOHN H. FITSCHEN P.L.S.
GRAVEN-THOMPSON & ASSOCIATES, INC.
ARCHITECTS ENGINEERS PLANNERS SURVEYORS
5154 OKEECHOBEE BOULEVARD
WEST PALM BEACH, FLORIDA 33409
SHEET 2 OF 2 SHEETS

TRACT K - MISSION BAY